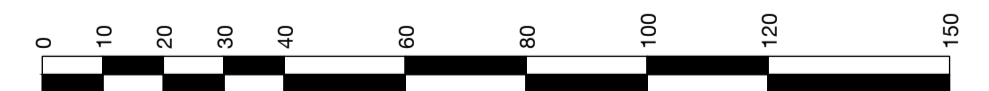
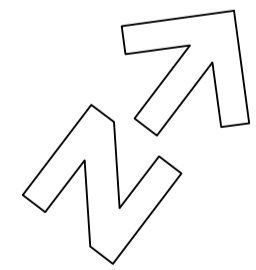
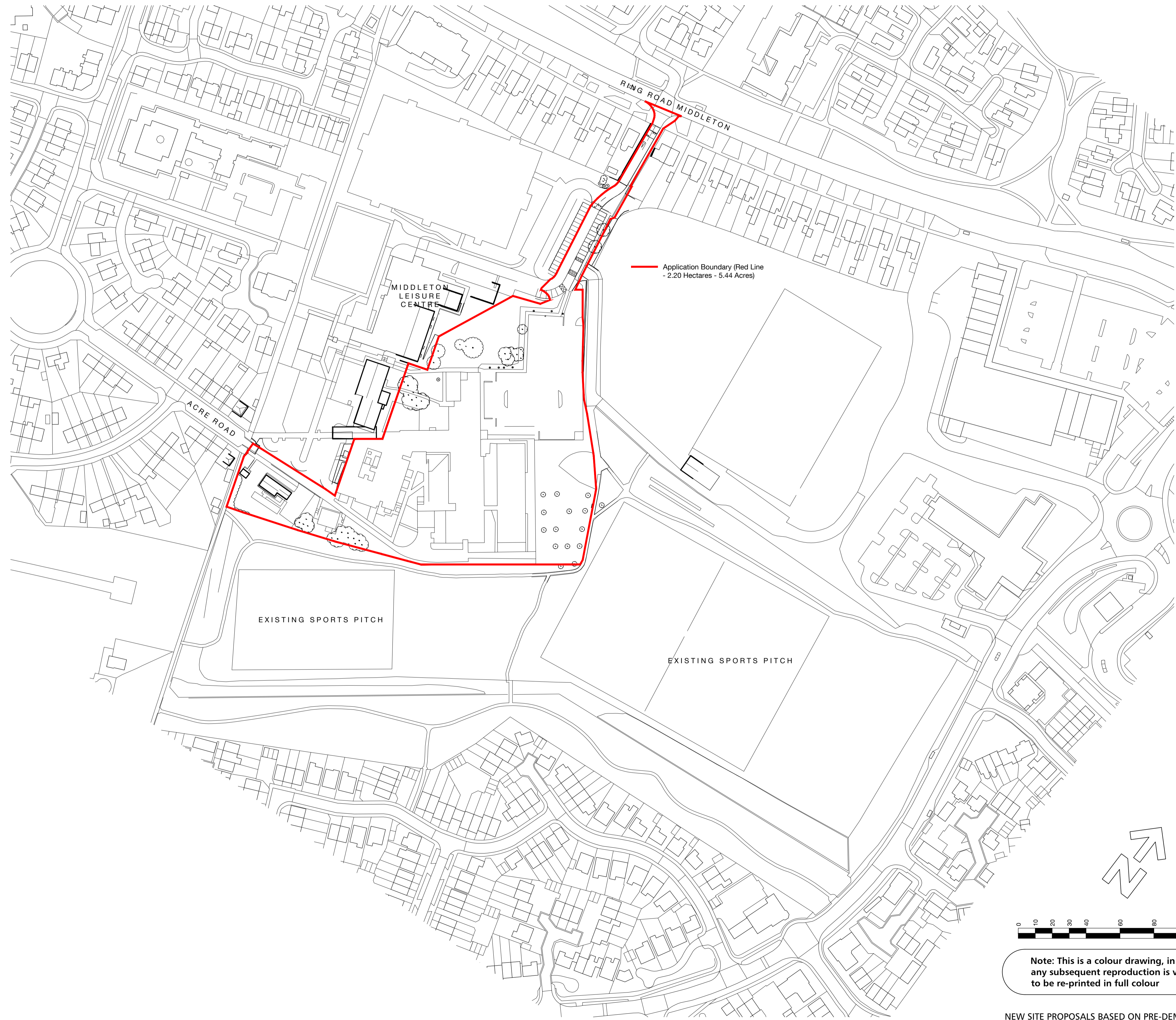


REVISIONS

P01	10/05/21	PSL	LM
FIRST ISSUE FOR COMMENT			
P02	27/08/21	PSL	CH
FINAL CP ISSUE			
P03	14/12/21	PSL	CH
RED LINE REVISED			



Note: This is a colour drawing, in order to ensure any subsequent reproduction is viewed correctly it is to be re-printed in full colour



55 St Pauls Street | Leeds | LS1 2TE
0113 887 3100
www.dla-architecture.co.uk

PROJECT
LAURENCE CALVERT ACADEMY
LEEDS

TITLE
LOCATION PLAN

SCALE 1:1250 DATE @A1 10/05/21

DLA REF 2019-047 DRAWN PSL REVIEWED LM

PROJECT ORIGIN'R ZONE LEVEL TYPE ROLE NUMBER
LRCE DLA ZZ 00 DR L 90111

STATUS S3 REVISION P03

NEW SITE PROPOSALS BASED ON PRE-DEMOLITION SURVEY OPS TOPOGRAPHICAL SURVEY (18L027/001 FEB 2019)

THIS DRAWING IS TO BE READ IN CONJUNCTION WITH ALL RELEVANT DLA LANDSCAPE AND URBAN DESIGN DETAIL DESIGN DRAWINGS AND SPECIFICATIONS